



Not-Equal Small Experiments in Research Commissioning Processes

clara.crivellaro@ncl.ac.uk

@unsolopunto | www.not-equal.tech | <https://openlab.ncl.ac.uk>





NOT-EQUAL

**BRINGING PEOPLE TOGETHER TO HELP
DEVELOP PRACTICAL RESPONSES THAT
CAN MAKE OUR DIGITAL SOCIETY
WORK FOR EVERYONE.**

JOIN THE NETWORK. MAKE A DIFFERENCE.

www.not-equal.tech | [@notequaltech](https://twitter.com/notequaltech)



Engineering and
Physical Sciences
Research Council

Open Lab
at Newcastle University

US
UNIVERSITY
OF SUSSEX



ROYAL
HOLLOWAY
UNIVERSITY
OF LONDON



Prifysgol
Abertawe
Swansea
University

PUBLIC SECTOR

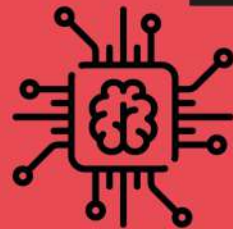
INDUSTRY

ACADEMIA

THIRD SECTOR

COMMUNITIES

CHALLENGE AREAS



**ALGORITHMIC
SOCIAL
JUSTICE**

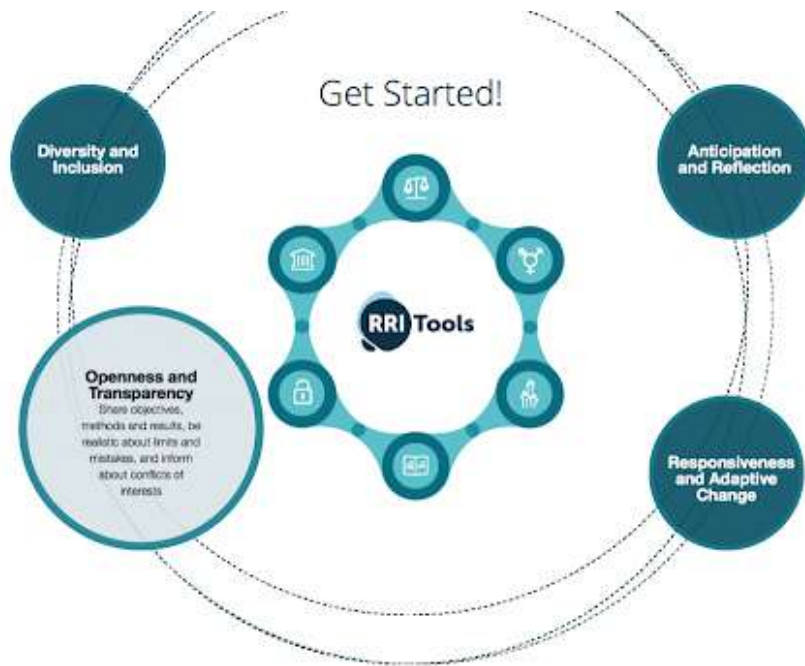


**DIGITAL
SECURITY FOR
ALL**



**FAIRER
FUTURES FOR
BUSINESS &
WORKFORCE**

Responsible Research & Innovation



RRI Tools, <http://www.rritools.eu/about-rrr>

Participatory Design

Participatory Action Research

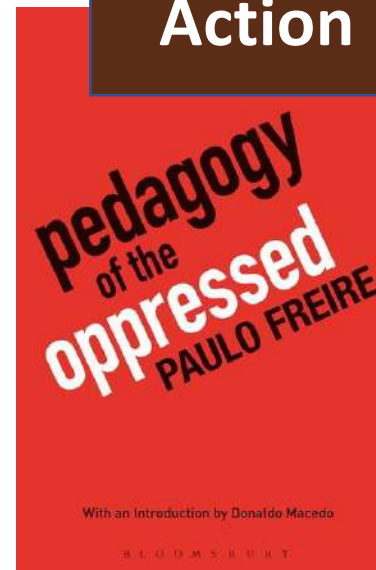
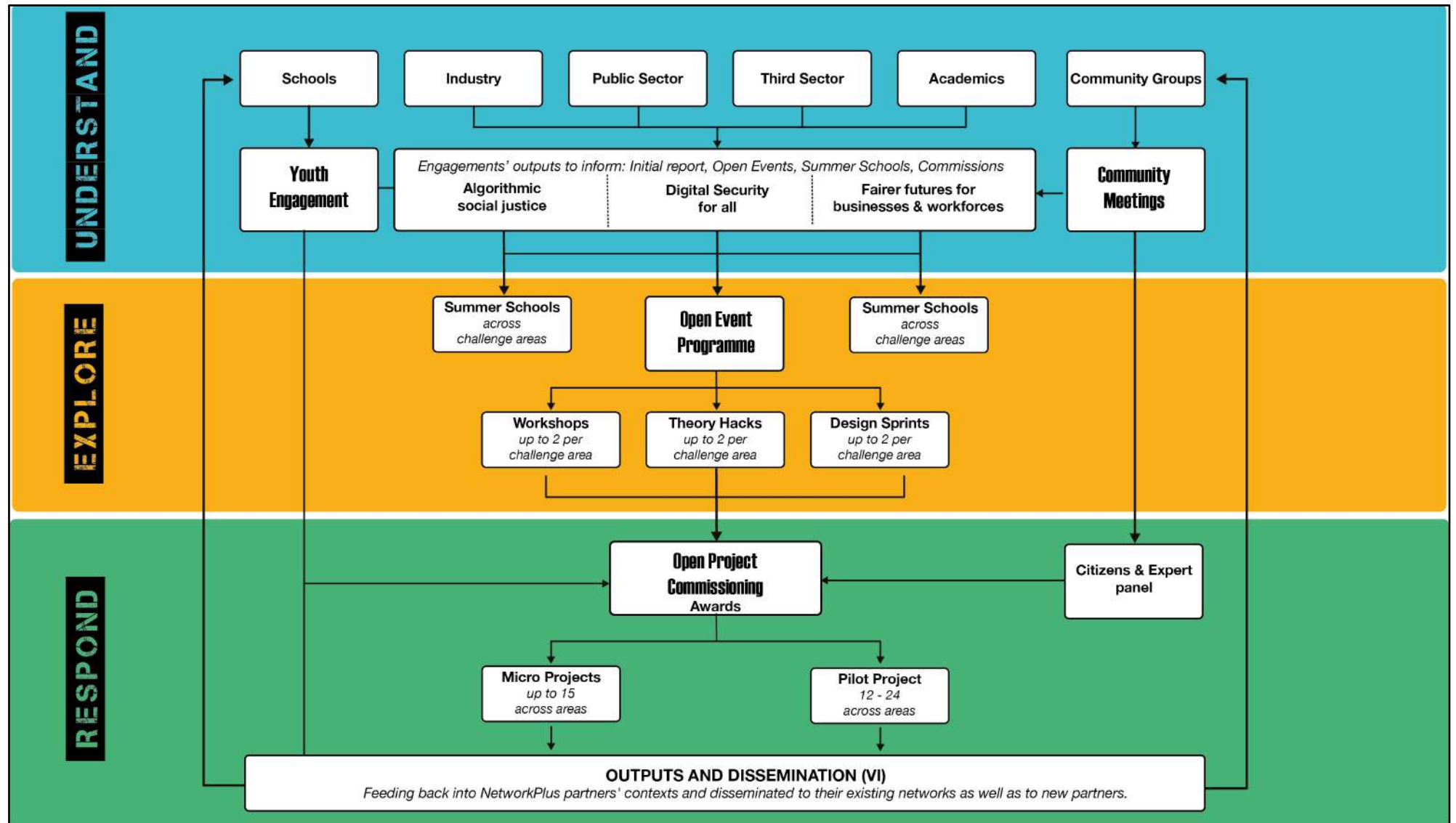
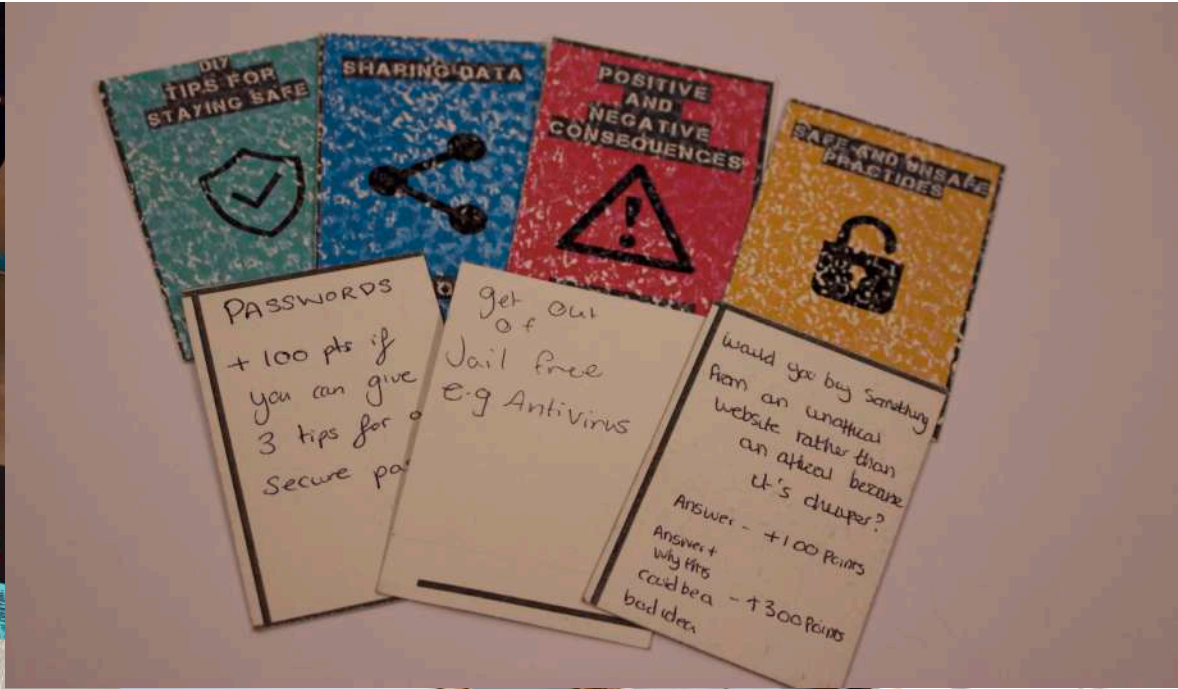
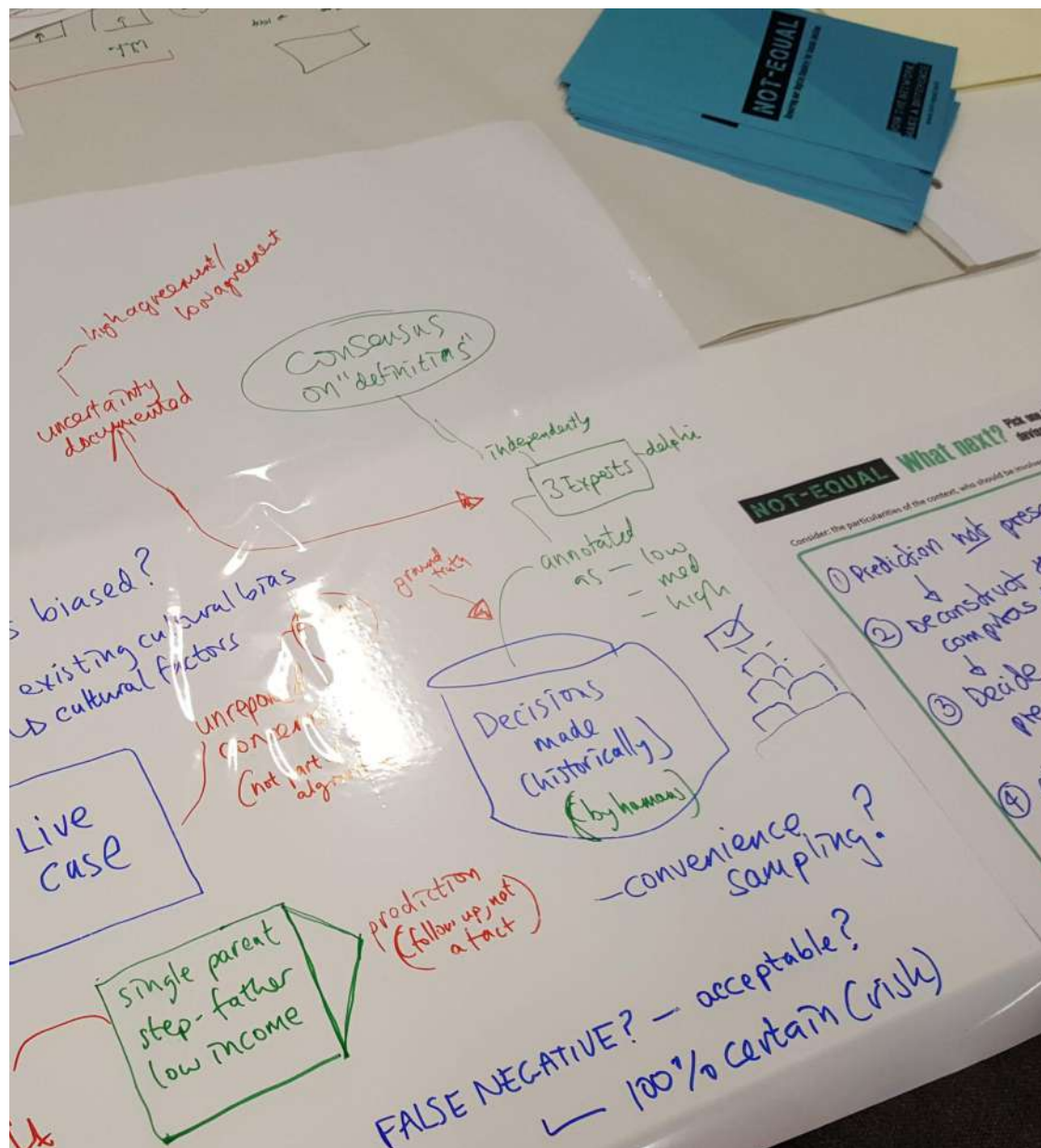


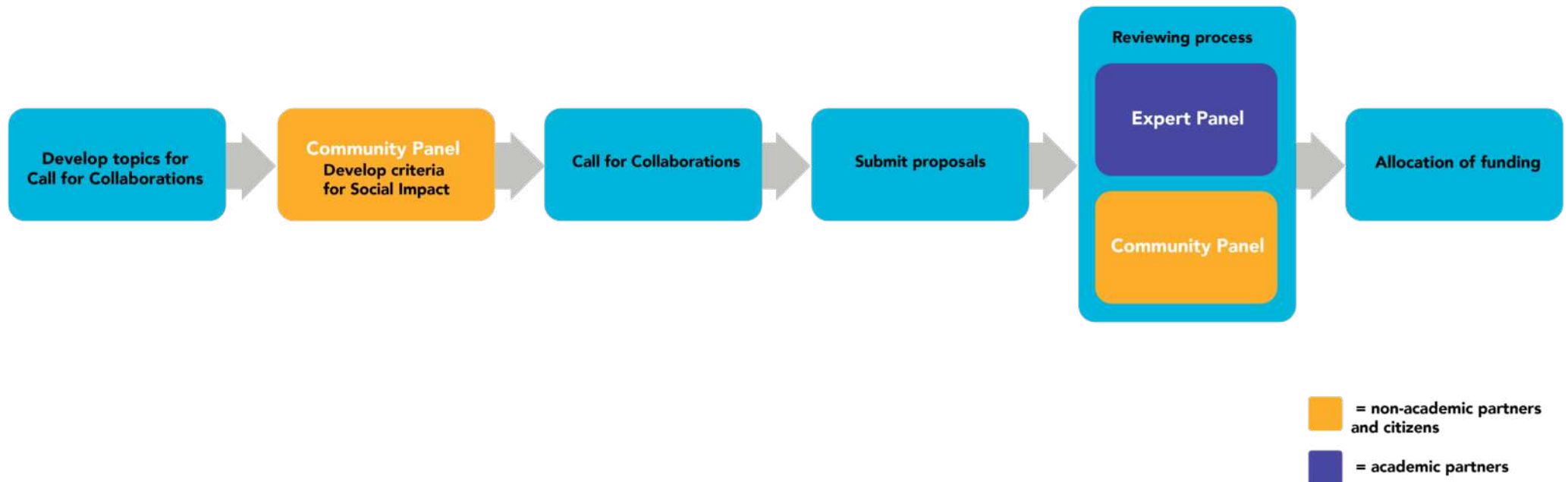
Image: @martinurbach/yout
h-in-power-f537f84b81e







Open Commissioning Programme



Catalyst: finding collaborators

The image displays the Catalyst platform, which is designed for finding collaborative projects and partners. It is divided into two main sections: a website interface on the left and a mobile app interface on the right.

Website Interface (Left):

- Header:** Features the "NOT-EQUAL catalyst" logo and the text "Find projects ideas and partners to develop a collaborative proposal!". Below this is a search bar labeled "Search for an idea :".
- Find projects ideas:** A section with a "Filter" sidebar and "Results" displayed as three colored cards.
- Filter Sidebar:**
 - Call for proposal:** Includes checkboxes for "Algorithmic Social Justice", "Cross Cutting Challenge Areas", "Digital Security For All", and "Fairer Futures For Businesses And Workforces".
 - Project focus:** Includes checkboxes for "Accountability And Care", "Enablement And Radical Trust", "Proactive Resilience And Reparation", "Recognition", and "Redistribution".
 - Keywords:** Includes checkboxes for "Accessibility", "Bias", "Care", "Human Rights", and "Inclusion".
- Results:** Three cards are shown:
 - Example Catalyst idea submission:** Represented by a blue card with a white icon of two arrows forming a loop.
 - Using digital tech to improve transparency & traceability of international garment supply chains to ensure fair working conditions for the most vulnerable:** Represented by an orange card with a white icon of a person at a computer with a heart shield.
 - Fair deployment of predictive analytics in Children's Services:** Represented by a red card with a white icon of a brain with circuit lines.

Mobile App Interface (Right):

- Header:** Shows "Catalyst LIVE" and navigation options like "Board", "Personal", "Private", and "Invite".
- Content:** A list of items with placeholder text like "[about.title]", "[about.subtitle]", "[about.long]", "[about.short]", "[home.title]", "[home.strapline]", "[home.searchLabel]", "[home.noResponses]", "[notFound.title]", and "[notFound.message]".
- Inbox:** A section with a "+ Add a card" button and a background image of a house.
- Public:** A section with a background image of a house and several cards with colorful bar charts and text, including "Example Catalyst idea submission", "Using digital tech to improve transparency & traceability of international garment supply chains to ensure fair working conditions for the most vulnerable workers", "Fair deployment of predictive analytics in Children's Services", "Investigation of Coordination effect on Collaborative Digital Manufacturing", and "Empowering the MCN community with better data agency".
- Private:** A section with a background image of a house and a card titled "Privacy and Trust on Social Media for Older Adults".

PROCESS

1. Defining criteria for social impact: defining norms + values, making the rules

01

Personal experiences story mapping activity

Personal prompts, mapping these visually

Aiding personal stories with 'other' stories from 'elsewhere'. (multiple perspectives)

02

Active Listening + Thematic clustering

Listening to stories and writing down themes.

Clustering themes (as per TA) to create groupings.

03

Developing and defining criteria.

Discussing and narrowing down themes

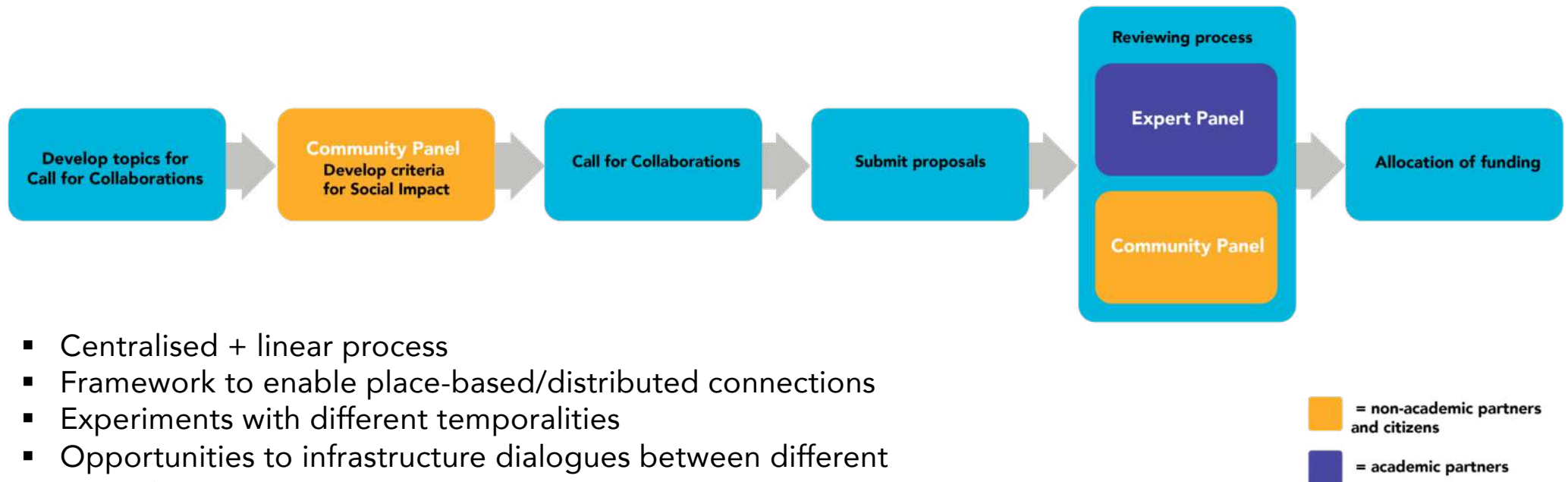
Articulating 3 criteria



2. Applying Criteria for Social Impact



Open Commissioning Programme



- Centralised + linear process
- Framework to enable place-based/distributed connections
- Experiments with different temporalities
- Opportunities to infrastructure dialogues between different expertises

Digital divide 'isolates and endangers' millions of UK's poorest

Charities warn of 'devastating effect' as most vulnerable households left without access to web

- Coronavirus - latest updates
- See all our coronavirus coverage

Supported by



About this content

Annie Kelly

Tue 28 Apr 2020 13.25 BST



371



▲ Elderly people, asylum seekers and refugees and households living in poverty are hit hardest by more expensive pay-as-you-go tariffs. Photograph: Phil Noble/Reuters

Not-Equal Covid-19 Engagements: How are you supporting your communities using digital tech during the pandemic?

- 21 organisations from the third sector, SMEs;
 - new services users; other disappearing;
 - skills and training
 - material access (lack of connectivity or hardware)
 - collaborations to develop responses

https://not-equal.tech/wp-content/uploads/2020/07/Not-Equal_COVID_19_CallToAction_Report.pdf



NOT-EQUAL

**BRINGING PEOPLE TOGETHER TO HELP
DEVELOP PRACTICAL RESPONSES THAT
CAN MAKE OUR DIGITAL SOCIETY
WORK FOR EVERYONE.**

JOIN THE NETWORK. MAKE A DIFFERENCE.

www.not-equal.tech | [@notequaltech](https://twitter.com/notequaltech)



Engineering and
Physical Sciences
Research Council

Open Lab
at Newcastle University

US
UNIVERSITY
OF SUSSEX



ROYAL
HOLLOWAY
UNIVERSITY
OF LONDON



Prifysgol
Abertawe
Swansea
University



Thank you.

clara.crivellaro@ncl.ac.uk | openlab.ncl.ac.uk | not-equal.tech

